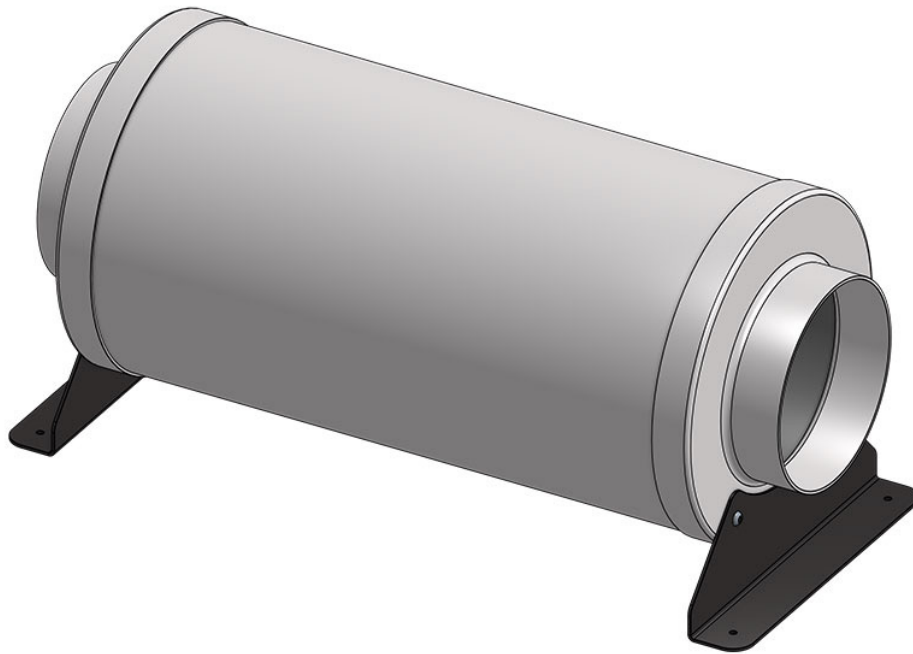


Mistral 150

DT-M-150



Mistral 150

MISTRAL 150 [DT-M-150] - SILENCED INLINE 150MM FAN MODULE WITH BRUSHLESS EC MOTOR AND MISTRAL COMMANDER INTERFACE

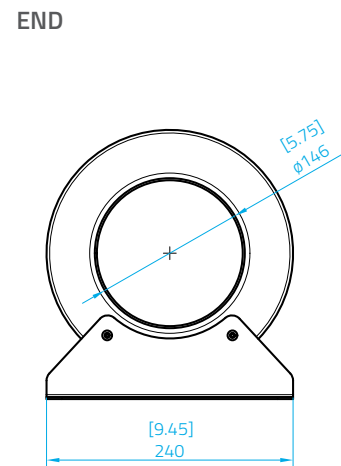
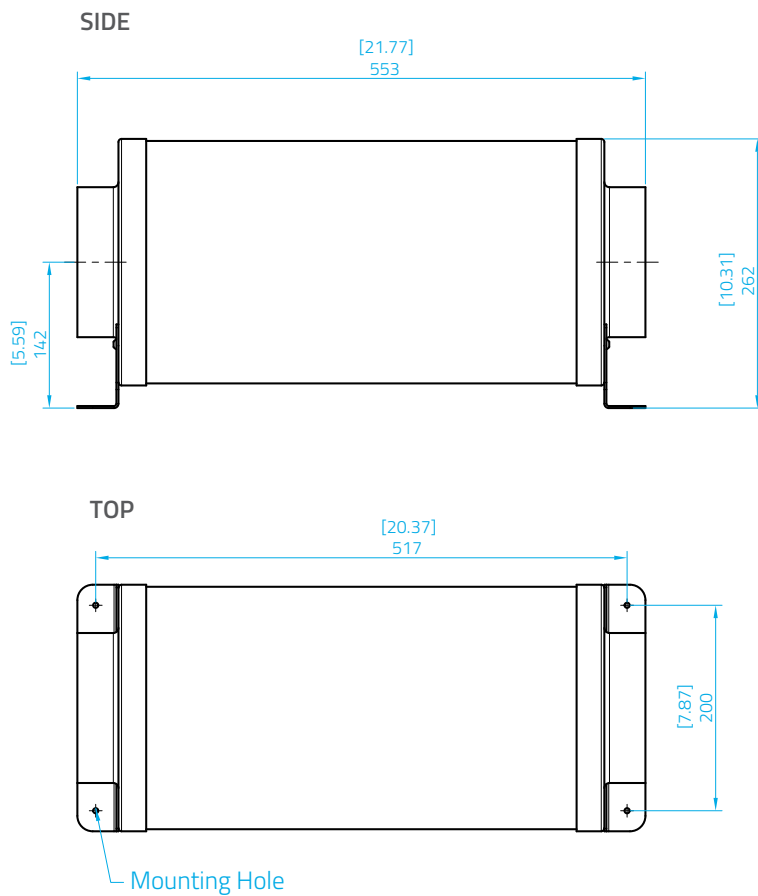
DT Mistral 150 is a silenced inline 150mm fan module with an advanced brushless EC motor and featuring a special interface to enable full monitoring and control by the Mistral Commander. The DT-M-150 delivers up to 550 cubic meters per hour of airflow.



The silenced Mistral-150 mounting plate includes isolation fittings to minimise vibration and is supplied with 6m of perforated acoustic ducting to ensure the quietest possible air movement solution.

The M-150 contains an advanced brushless EC Motor with Mistral Commander Interface. The interface enables full reporting of fan speed and accurate speed control between 0-100% of full output. This enables M-150 to only operate when required for maximum efficiency.

The M-150 delivers up to 550 cubic meters per hour of airflow and is ideal for applications with a heat load up to 2500 BTU/hr.



Mistral 150 - technical drawing

Display Technologies is a British brand specialising in advanced projector screens, mounting brackets and custom installation solutions. Their focus on the combination of technical performance and design for install, ensure that all DT products meet the needs of both the client and installer.

